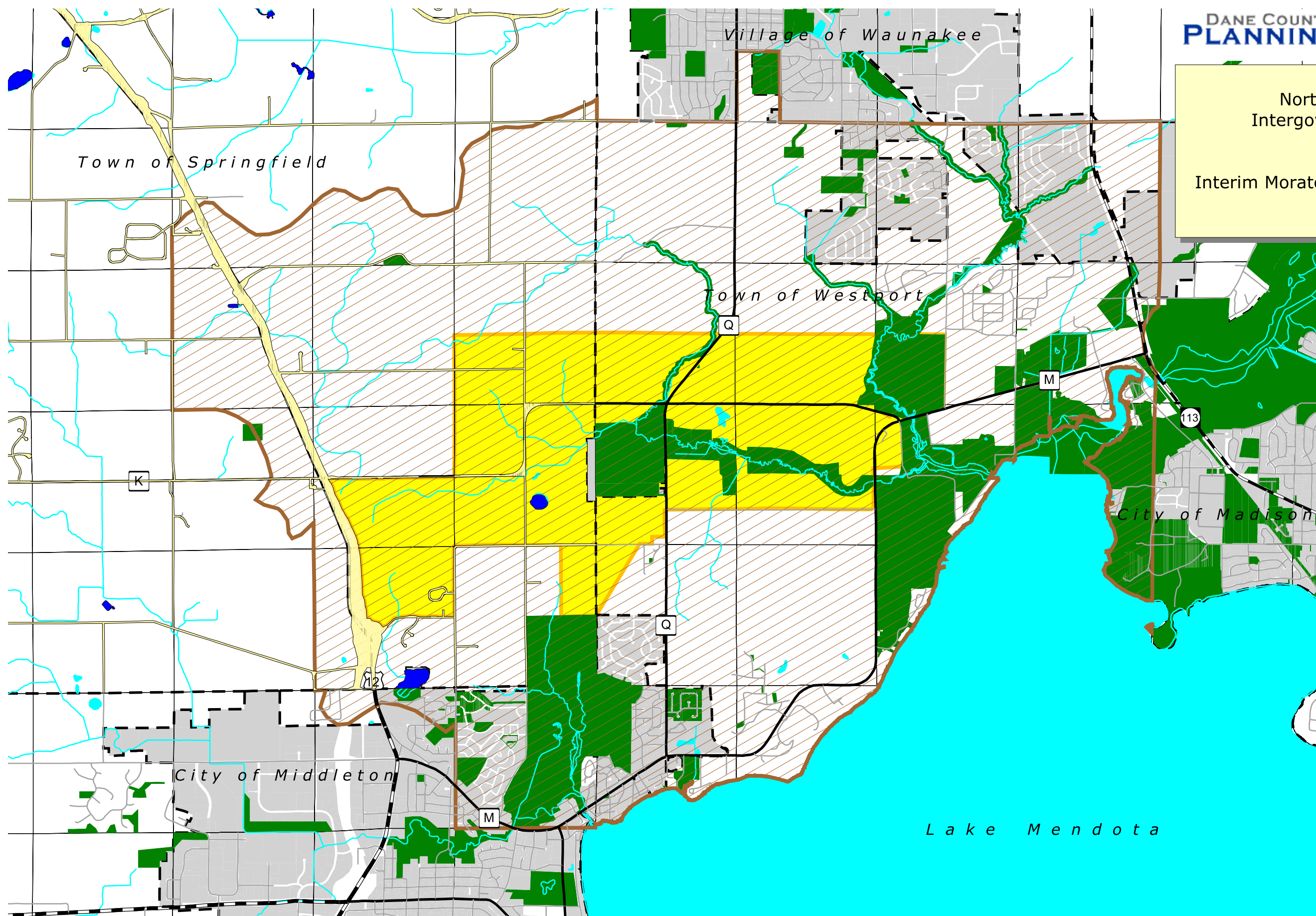


North Mendota Parkway
Intergovernmental Agreement

Exhibit B:
Interim Moratorium & Environmental Study

As approved by
North Mendota Parkway
Implementation Oversight
Committee
July 19, 2006 -- REVISED



Legend

- North Mendota Interim Moratorium Area
- North Mendota Environmental Study Area
- Water
- Roads & Highways**
 - County Trunk Highway
 - Interstate
 - State Trunk Highway
 - U.S. Highway
- Public Lands
- Municipalities
- Incorporated areas**
 - CITY OF MADISON
 - CITY OF MIDDLETON
 - VILLAGE OF WAUNAKEE

Map prepared 7/24/2006
Revised 7/25/2006
by Dane Co. Planning & Development

